



**Model 1W  
General Purpose Attenuators**

**dc to 4.0 GHz  
2 Watts**

*Low Cost, Type N*



**Features**

- /// **Attenuation Values from 1 to 10, 20, & 30 dB.**
- /// **Low Cost**
- /// **Wireless Applications** - Optimized for use in the wireless communications bands.

**Specifications**

**NOMINAL IMPEDANCE:** 50 Ω  
**FREQUENCY RANGE:** dc to 4.0 GHz

MAXIMUM DEVIATION OVER FREQUENCY:	
Nominal ATTN (dB)	Deviation (dB)
1 -6	± 0.30
7 -10, 20	± 0.50
30	± 0.75

MAXIMUM SWR:	
Frequency (GHz)	SWR
dc - 8.0	1.25

**POWER RATING:** 2 watts **average** to 25°C ambient temperature, derated linearly to 0.5 watts @ 105°C. 250 watts **peak** (5 μsec pulse width; 0.4% duty cycle).

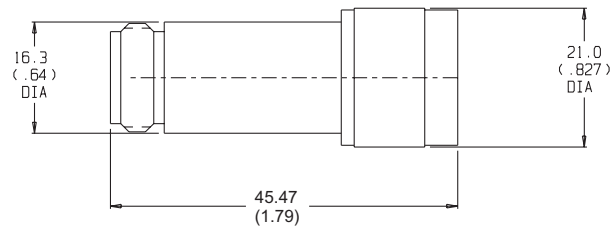
**POWER COEFFICIENT:** < 0.005 dB/dB/watt  
**TEMPERATURE COEFFICIENT:** < 0.0004 dB/dB/°C  
**TEMPERATURE RANGE:** -20°C to +105°C.

**CONNECTORS:** Type N (male/female) connectors - mate nondestructively with MIL-C-39012 connectors.

**CONSTRUCTION:** Nickel-plated brass body and connectors, gold plated Beryllium contacts

**WEIGHT:** 65 g (2.5 oz) maximum

**PHYSICAL DIMENSIONS:**



NOTE: All dimensions are given in mm (inches) and are maximum, unless otherwise specified.

**MODEL NUMBER DESCRIPTION:**

Example:

