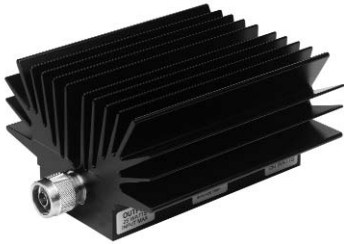


Model 49 High Power Fixed Coaxial Attenuator

dc to 8.5 GHz
150 Watts



Conduction/Convection Cooled



Features

- Quality connectors with special high temperature support beads.
- Designed to meet environmental requirements of MIL-A-3933.
- Flexible Mounting Position - The units may be mounted in horizontal (fins up) or vertical position.

Specifications

NOMINAL IMPEDANCE: 50 Ω

FREQUENCY RANGE: dc to 8.5 GHz

MAXIMUM DEVIATION OVER FREQUENCY (dB):				
Nominal ATTN (dB)	dc-4 GHz		4 - 8.5 GHz	
	49	49-LIM	49	49-LIM
3, 6	± 0.40	---	± 0.75	---
10, 20	± 0.40	± 0.70	± 0.75	± 1.25
30	± 0.40	± 0.70	± 0.75	± 1.75
40	± 0.50	± 0.70	± 1.00	± 1.75

MAXIMUM SWR:	
Frequency (GHz)	SWR
dc - 4	1.25
4 - 8.5	1.35

3rd ORDER INTERMODULATION (49-XX-XX-LIM ONLY):

Reflected Levels (IM3), -95 & Through Levels (IM3), -110 dBc with two input signals @ 869 MHz and 891 MHz with average carrier power levels of +43 dBm each.

POWER RATING (mounted horizontally or vertically): 150 watts average (unidirectional) to 35°C ambient temperature, derated linearly to 15 watts @ 125°C. 5 kilowatt peak (5 μsec pulse width; 1.5% duty cycle). Maximum power rating into output port is 25 watts average.

POWER COEFFICIENT: <0.0001 dB/dB/watt

TEMPERATURE COEFFICIENT: <0.0004 dB/dB/°C

TEMPERATURE RANGE: -55°C to 125°C

TEST DATA: Insertion loss test data supplied at 0.05, 4.0, and 8.5 GHz. Other test data can be provided at additional cost.

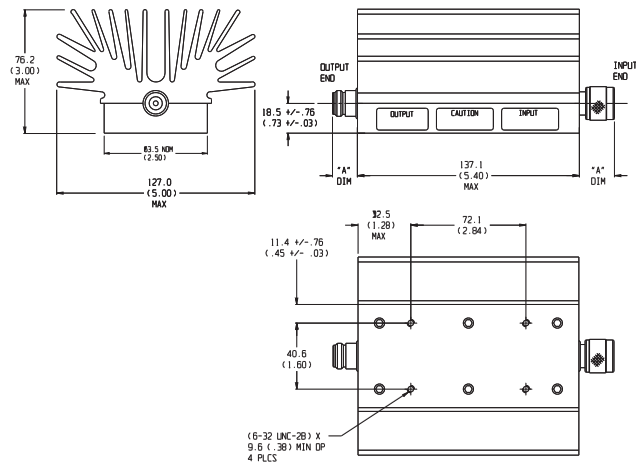
CONNECTORS: Type N connectors per MIL-STD-348 interface dimensions - mate nondestructively with MIL-C-39012 connectors.

Connector Options	Type/Description
3	Type N, Female
4	Type N, Male

CONSTRUCTION: Aluminum alloy body, stainless steel connectors; gold plated beryllium copper female contacts or stainless steel male contacts. (-LIM option uses different connector and contact materials)

WEIGHT: 1,450 g (3 lbs, 3 oz.) maximum

PHYSICAL DIMENSIONS:

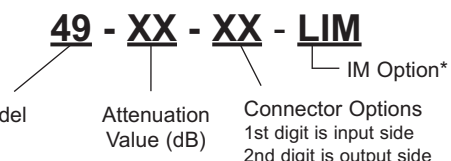


Connector	DIM A
N Male	22.9 (0.90)
N Female	15.0 (0.59)

NOTE: All dimensions are given in mm (inches) and are maximum, unless otherwise specified.

MODEL NUMBER DESCRIPTION:

Example:



*Add -LIM for Low Intermodulation option. Option only available in 10, 20, 30, and 40 dB and is not available through Express.

Fixed Coaxial Attenuators



Model 66 High Power Fixed Coaxial Attenuator

dc to 18.0 GHz
150 Watts

Convection Cooled



Features

- /// Quality injection molded connectors.
- /// Designed to meet environmental requirements of MIL-A-3933.
- /// Broadband performance, ideal for test applications.

Specifications

NOMINAL IMPEDANCE: 50 Ω

FREQUENCY RANGE: dc to 18.0 GHz

MAXIMUM DEVIATION OVER FREQUENCY:	
Nominal ATTN (dB)	Deviation (dB)
10	± 2.00
20, 30, 40	± 1.50

MAXIMUM SWR:		
Frequency (GHz)	10	20, 30, 40 dB
dc - 18	1.90	1.60

POWER RATING (mounted horizontally): 150 watts average (unidirectional) @ case temperature of -55°C to +100 °C maximum. 1 kilowatt peak (5 μsec pulse width; 7.5% duty cycle). Maximum power rating into output port is 10 watts average.

POWER COEFFICIENT: <0.0002 dB/dB/watt

TEMPERATURE COEFFICIENT: <0.0004 dB/dB/°C

TEMPERATURE RANGE: -55°C to 100°C (case temp.)

TEST DATA: Insertion loss test data supplied at 0.05, 4.0, 8.0, 12.4 and 18.0 GHz.

CONNECTORS: Type N connectors per MIL-STD-348 interface dimensions - mate nondestructively with MIL-C-39012 connectors.

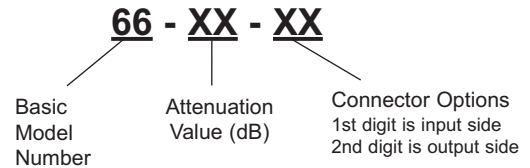
Connector Options	Type/Description
3	Type N, Female
4	Type N, Male

CONSTRUCTION: Aluminum alloy body, stainless steel connectors; gold plated beryllium copper contacts.

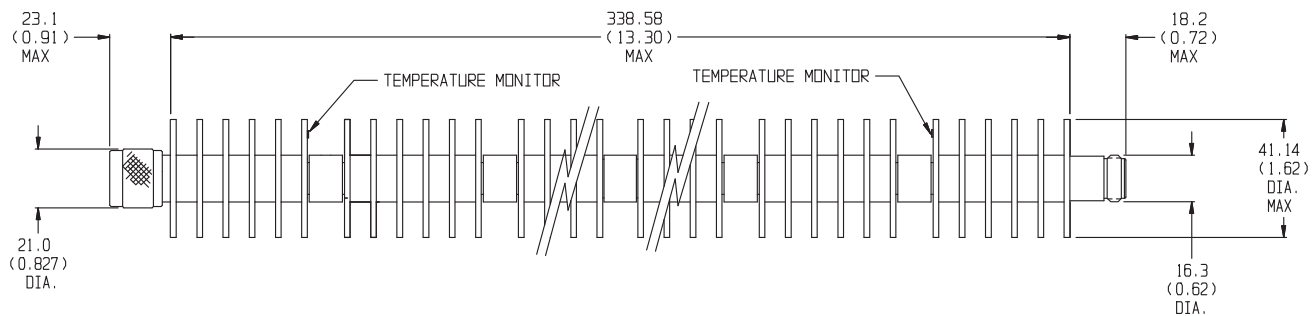
WEIGHT: 480 g (17 oz.) maximum

MODEL NUMBER DESCRIPTION:

Example:



PHYSICAL DIMENSIONS:



NOTE: All dimensions are given in mm (inches) and are maximum, unless otherwise specified.